

C39

PVC LISTINO PREZZI PRICE LIST 03/2018



RACCORDI IN PVC PER TUBAZIONI IN PRESSIONE

Materiale:

Raccordi in PVC-U 250
(PVC rigido, MRS 25 MPa)
Su richiesta: raccordi in ABS.

Colore:

Grigio scuro (RAL 7011).

Giunzione:

Per incollaggio nel bicchiere secondo serie metrica ISO 161-1 per accoppiamento a tubi corrispondenti alla norma UNI EN ISO 1452: 2010.

Temperatura massima di esercizio:

45°C (60°C senza pressione).

Pressione massima di esercizio:

10 bar a 20°C o inferiore (adduzione acqua); per i raccordi ottenuti con parti saldate testa a testa fino a 4 bar a 20°C (adduzione acqua). Per il dettaglio delle pressioni di esercizio si rinvia al catalogo tecnico-dimensionale e alle informazioni contenute nel sito web www.raccordplast.com
Usò non consentito con fluidi gassosi compressi.

Trasporto acqua potabile:

Idoneità al trasporto di acqua potabile in accordo con la legislazione italiana e le direttive europee.

PVC FITTINGS FOR PRESSURE PIPING

Material:

Fittings in Rigid PVC-U 250
(unplasticized PVC, MRS 25 MPa)
On demand: ABS fittings.

Colour:

Dark grey (RAL 7011).

Jointing:

By solvent cement welding in the socket according to metric series ISO 161-1 for jointing to pipes conforming to EN ISO 1452: 2009.

Maximum working temperature:

45°C (60°C without pressure).

Maximum working pressure:

10 bar at 20°C or less (water supply); for the fittings obtained by butt welded parts up to 4 bar at 20°C (water supply). For the details of the working pressure, please, refer to our technical-dimensional catalogue and to the information included in our web site www.raccordplast.com
Use not allowed with compressed gaseous fluids.

Use for potable water:

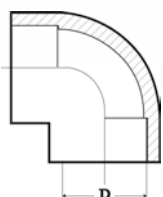
Fitness to the transport of drinking water according to Italian law and European directives.

C39

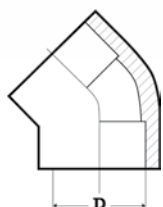
RACCORDI IN PVC PER INCOLLAGGIO PVC FITTINGS FOR JOINTING BY SOLVENT CEMENT WELDING



CV90GO	D	EURO	COD.
Gomiti 90° <i>Elbows 90°</i>	20	1,10	CV90GO020
	25	1,30	CV90GO025
	32	1,54	CV90GO032
	40	2,69	CV90GO040
	50	3,79	CV90GO050
	63	5,43	CV90GO063
	75	12,07	CV90GO075
	90	15,74	CV90GO090
	110	23,39	CV90GO110
	125	41,68	CV90GO125
	140	51,72	CV90GO140
	160	73,60	CV90GO160
	180	131,77	CV90GO180
	200	126,61	CV90GO200
	225	148,31	CV90GO225
	250	226,27	CV90GO250
	280	318,99	CV90GO280
	315	393,16	CV90GO315
	355	554,45	CV90GO355
	400	649,27	CV90GO400




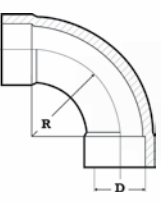
CV45GO	D	EURO	COD.
Gomiti 45° <i>Elbows 45°</i>	20	1,80	CV45GO020
	25	2,04	CV45GO025
	32	2,75	CV45GO032
	40	3,40	CV45GO040
	50	4,28	CV45GO050
	63	6,74	CV45GO063
	75	10,77	CV45GO075
	90	15,24	CV45GO090
	110	32,65	CV45GO110
	125	38,24	CV45GO125
	140	45,93	CV45GO140
	160	53,78	CV45GO160
	180	92,58	CV45GO180
	200	88,52	CV45GO200
	225	98,87	CV45GO225
	250	185,38	CV45GO250
	280	253,54	CV45GO280
	315	351,29	CV45GO315
	355	470,63	CV45GO355
	400	545,09	CV45GO400


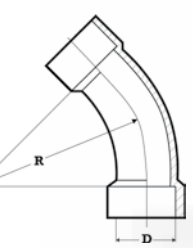



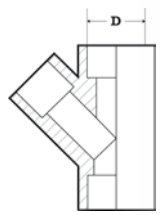
C39

RACCORDI IN PVC PER INCOLLAGGIO PVC FITTINGS FOR JOINTING BY SOLVENT CEMENT WELDING




CV90CR	D	EURO	COD.
<p>Curve 90° R=1,5 D Bends 90° R=1,5 D</p>   <p>1) Curve composte con parti saldate testa/testa. <i>Bends composed by moulded parts jointed by butt welding.</i></p> <p>2) Curve ottenute con bicchieri stampati e porzioni di tubo saldati testa/testa. <i>Bends composed by moulded sockets and parts of pipes jointed by butt welding.</i></p>	75	36,55	CV90CR075
	90	46,25	CV90CR090
	110	75,43	CV90CR110
	125	91,83	CV90CR125
	140	94,43	CV90CR140
	160	108,79	CV90CR160
	180 ¹	223,45	CV90CR180
	200 ¹	234,18	CV90CR200
	225 ¹	256,70	CV90CR225
	250 ¹	274,17	CV90CR250
	280 ¹	367,47	CV90CR280
	315 ¹	565,78	CV90CR315
	355 ¹	672,78	CV90CR355
	400 ¹	757,02	CV90CR400
	500 ²	2250,30	CV90CR500

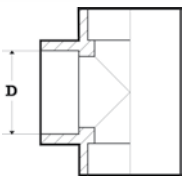
CV45CR	D	EURO	COD.
<p>Curve 45° R=1,5 D Bends 45° R=1,5 D</p>   <p>1) V. nota (1) CV90CR <i>As note (1) CV90CR</i></p> <p>2) V. nota (2) CV90CR <i>As note (2) CV90CR</i></p>	315 ¹	406,66	CV45CR315
	355 ¹	507,74	CV45CR355
	400 ¹	614,42	CV45CR400
	500 ²	1638,72	CV45CR500

CV45TE	D	EURO	COD.
<p>Te 45° Tees 45°</p>  	160	113,11	CV45TE160


**RACCORDI
IN PVC PER INCOLLAGGIO**
PVC FITTINGS FOR JOINTING
BY SOLVENT CEMENT WELDING

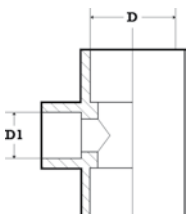


CV90TE	D	EURO	COD.
<p>Te 90° Tees 90°</p> 	20	1,33	CV90TE020
	25	1,53	CV90TE025
	32	2,04	CV90TE032
	40	3,29	CV90TE040
	50	4,75	CV90TE050
	63	7,10	CV90TE063
	75	13,34	CV90TE075
	90	18,92	CV90TE090
	110	30,88	CV90TE110
	125	56,76	CV90TE125
	140	76,76	CV90TE140
	160	85,87	CV90TE160
	180	152,64	CV90TE180
	200	143,39	CV90TE200
	225	154,68	CV90TE225
	250	253,54	CV90TE250
	280	380,86	CV90TE280
315	463,63	CV90TE315	
355 ¹	922,58	CV90TE355	
400 ¹	922,58	CV90TE400	
500 ²	2375,78	CV90TE500	



- 1) Te composti con parti saldate testa/testa.
Tees composed by moulded parts jointed by butt welding.
- 2) Te ottenuto con bicchieri stampati e porzioni di tubo saldati testa/testa.
Tee composed by moulded sockets and parts of pipes jointed by butt welding.

CVTR	D	D1	EURO	COD.
<p>Te 90° ridotti Tees 90° Reducing</p> 	90	50	20,49	CVTR090050
		63	20,49	CVTR090063
		75	20,49	CVTR090075
		110	50	31,75
	63		31,75	CVTR110063
	75		31,75	CVTR110075
	90		31,75	CVTR110090
	160	90	89,19	CVTR160090
		110	89,19	CVTR160110
	180	110	152,64	CVTR180110
			143,39	CVTR200090
	200	110	143,39	CVTR200110
			143,39	CVTR200160
			143,39	CVTR200160
	225	90	154,68	CVTR225090
			154,68	CVTR225110
			154,68	CVTR225160
	250	110	237,39	CVTR250110
			237,39	CVTR250160
			237,39	CVTR250200
280	160	359,77	CVTR280160	
		359,77	CVTR280225	
		359,77	CVTR280225	
315	90	454,22	CVTR315090	
		454,22	CVTR315110	
		454,22	CVTR315160	
		441,38	CVTR315200	
		441,38	CVTR315225	
355 ¹	315	922,58	CVTR355315	
		605,89	CVTR400110	
		922,58	CVTR400315	
		922,58	CVTR400355	
		922,58	CVTR400355	
400 ¹	315	922,58	CVTR400315	
		922,58	CVTR400355	
500 ²	400	2375,78	CVTR500400	
		2375,78	CVTR500400	



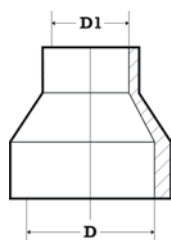
- 1) Te composti con parti saldate testa/testa.
Tees composed by moulded parts jointed by butt welding.
- 2) Te ottenuto con bicchieri stampati e porzioni di tubo saldati testa/testa.
Tee composed by moulded sockets and parts of pipes jointed by butt welding.

C39

RACCORDI IN PVC PER INCOLLAGGIO PVC FITTINGS FOR JOINTING BY SOLVENT CEMENT WELDING



CVM	D	D1	EURO	COD.
Manicotti ridotti FxF <i>Reducing Sockets FxF</i>	25	20	1,10	CVM025020
	32	25	1,40	CVM032025
	40	32	1,99	CVM040032
	50	40	2,54	CVM050040
	63	50	3,53	CVM063050
	75	63	7,23	CVM075063
	90	50	12,34	CVM090050
		63	12,34	CVM090063
		75	12,34	CVM090075
	110	63	18,24	CVM110063
		75	18,24	CVM110075
		90	16,81	CVM110090
	125	110	35,30	CVM125110
	140	110	47,08	CVM140110
		125	47,08	CVM140125
	160	110	47,43	CVM160110
		125	47,43	CVM160125
		140	47,43	CVM160140
	180	110	89,11	CVM180110
		125	89,11	CVM180125
		140	89,11	CVM180140
		160	89,11	CVM180160
	200	110	94,29	CVM200110
		125	91,62	CVM200125
		140	91,62	CVM200140
160		91,62	CVM200160	
180		91,62	CVM200180	
225	110	117,81	CVM225110	
	125	117,81	CVM225125	
	140	114,47	CVM225140	
	160	114,47	CVM225160	
	180	114,47	CVM225180	
	200	114,47	CVM225200	
250	110	148,07	CVM250110	
	125	148,07	CVM250125	
	140	148,07	CVM250140	
	160	143,88	CVM250160	
	180	143,88	CVM250180	
	200	143,88	CVM250200	
	225	143,88	CVM250225	
280	110	168,83	CVM280110	
	125	168,83	CVM280125	
	140	168,83	CVM280140	
280	160	168,83	CVM280160	
	180	164,06	CVM280180	
	200	164,06	CVM280200	
	225	164,06	CVM280225	
	250	164,06	CVM280250	
315	110	188,01	CVM315110	
	140	188,01	CVM315140	
	160	188,01	CVM315160	
	180	188,01	CVM315180	
	200	178,81	CVM315200	
	225	178,81	CVM315225	
	250	178,81	CVM315250	
355	280	178,81	CVM315280	
	315	194,65	CVM355315	
400	160	237,53	CVM400160	
	225	237,53	CVM400225	
	280	237,53	CVM400280	
	315	215,90	CVM400315	
	355	215,90	CVM400355	
500	400	282,66	CVM500400	

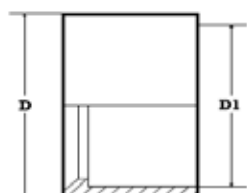


C39

RACCORDI IN PVC PER INCOLLAGGIO PVC FITTINGS FOR JOINTING BY SOLVENT CEMENT WELDING



CVB	D	D1	EURO	COD.
Bussole di riduzione MxF <i>Reducing Bushes MxF</i>	25	20	0,93	CVB025020
	32	20	1,10	CVB032020
		25	1,10	CVB032025
	40	20	1,23	CVB040020
		25	1,23	CVB040025
		32	1,23	CVB040032
	50	32	1,87	CVB050032
		40	1,87	CVB050040
	63	32	2,24	CVB063032
		40	2,24	CVB063040
		50	2,24	CVB063050
	75	50	3,87	CVB075050
		63	3,87	CVB075063
	90	50	7,44	CVB090050
		63	7,44	CVB090063
		75	7,44	CVB090075
	110	63	10,92	CVB110063
		75	10,92	CVB110075
		90	10,92	CVB110090
	125	110	18,29	CVB125110
	140	110	25,65	CVB140110
		125	25,65	CVB140125
	160	90	26,80	CVB160090
		110	26,80	CVB160110
		125	26,80	CVB160125
140		26,80	CVB160140	
180	110	31,63	CVB180110	
	125	31,63	CVB180125	
	140	31,63	CVB180140	
	160	31,63	CVB180160	
200	110	33,40	CVB200110	
	125	31,82	CVB200125	
	140	31,82	CVB200140	
	160	31,82	CVB200160	
	180	31,82	CVB200180	
225	90	49,92	CVB225090	
	110	49,92	CVB225110	
	125	49,92	CVB225125	
	140	47,54	CVB225140	
	160	47,54	CVB225160	
	180	47,54	CVB225180	
	200	47,54	CVB225200	
250	140	96,70	CVB250140	
	160	92,23	CVB250160	
	180	92,23	CVB250180	
	200	92,23	CVB250200	
	225	92,23	CVB250225	
	280	92,23	CVB250280	
280	160	105,75	CVB280160	
	200	105,75	CVB280200	
	225	105,75	CVB280225	
	250	105,75	CVB280250	
	315	105,75	CVB280315	
315	160	121,45	CVB315160	
	200	114,47	CVB315200	
	225	114,47	CVB315225	
	250	114,47	CVB315250	
	280	114,47	CVB315280	
355	315	130,90	CVB355315	
400	280	172,69	CVB400280	
	315	161,76	CVB400315	
	355	161,76	CVB400355	

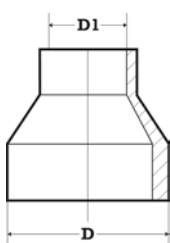


C39

RACCORDI IN PVC PER INCOLLAGGIO PVC FITTINGS FOR JOINTING BY SOLVENT CEMENT WELDING

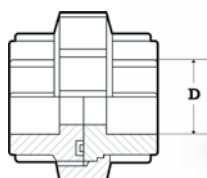


CVR	D	D1	EURO	COD.
Riduzioni MxF <i>Reducers MxF</i>	63	40	3,63	CVR063040
	75	40	6,82	CVR075040
		50	6,82	CVR075050
	90	40	8,67	CVR090040
		50	8,67	CVR090050
		63	8,67	CVR090063
	110	50	12,34	CVR110050
		63	12,34	CVR110063
		75	12,34	CVR110075
	225	110	108,43	CVR225110
		125	108,43	CVR225125
		140	105,36	CVR225140
		160	105,36	CVR225160
	250	110	136,22	CVR250110
		125	136,22	CVR250125
		140	133,62	CVR250140
		160	133,62	CVR250160
		180	133,62	CVR250180
		200	133,62	CVR250200
	280	110	163,44	CVR280110
		125	163,44	CVR280125
		140	163,44	CVR280140
		160	160,32	CVR280160
		180	160,32	CVR280180
		200	160,32	CVR280200
		225	160,32	CVR280225
	315	110	178,99	CVR315110
		125	178,99	CVR315125
140		178,99	CVR315140	
160		178,99	CVR315160	
180		175,58	CVR315180	
200		175,58	CVR315200	
225		175,58	CVR315225	
250		175,58	CVR315250	



A richiesta a 3
diametri M/FxF.
On request with 3
diameters M/FxF.

CVBOCH	D	EURO	COD.	
Bocchettoni <i>Socket Unions</i>	20	4,18	CVBOCH020	
	25	4,33	CVBOCH025	
	32	5,88	CVBOCH032	
	40	7,44	CVBOCH040	
	50	9,69	CVBOCH050	
	63	13,54	CVBOCH063	
	75	43,11	CVBOCH075	
	90	48,48	CVBOCH090	
	110	57,37	CVBOCH110	

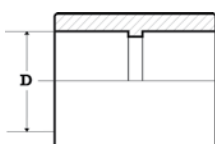


C39

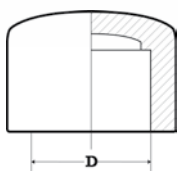
RACCORDI IN PVC PER INCOLLAGGIO PVC FITTINGS FOR JOINTING BY SOLVENT CEMENT WELDING



CVMATI	D	EURO	COD.
Manicotti Sockets	20	0,86	CVMATI020
	25	0,92	CVMATI025
	32	0,99	CVMATI032
	40	1,57	CVMATI040
	50	2,04	CVMATI050
	63	2,89	CVMATI063
	75	6,90	CVMATI075
	90	11,54	CVMATI090
	110	15,92	CVMATI110
	125	20,40	CVMATI125
	140	27,38	CVMATI140
	160	31,38	CVMATI160
	180	67,58	CVMATI180
	200	67,94	CVMATI200
	225	77,71	CVMATI225
	250	142,33	CVMATI250
	280	152,15	CVMATI280
	315	177,48	CVMATI315
	355	219,26	CVMATI355
	400	243,79	CVMATI400
500	308,37	CVMATI500	



CVCALO	D	EURO	COD.
Calotte Caps	20	1,02	CVCALO020
	25	1,04	CVCALO025
	32	1,23	CVCALO032
	40	1,66	CVCALO040
	50	2,44	CVCALO050
	63	3,26	CVCALO063
	75	7,90	CVCALO075
	90	10,70	CVCALO090
	110	15,31	CVCALO110
	125	28,83	CVCALO125
	140	30,83	CVCALO140
	160	36,21	CVCALO160
	200	72,03	CVCALO200
	225	90,88	CVCALO225
	250	139,13	CVCALO250
	280 ¹⁾	159,29	CVCALO280
315	187,14	CVCALO315	
355 ¹⁾	230,59	CVCALO355	
400	255,09	CVCALO400	



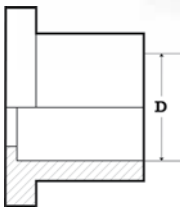
1) In preparazione.
In preparation.

C39

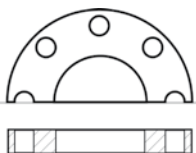
RACCORDI IN PVC PER INCOLLAGGIO PVC FITTINGS FOR JOINTING BY SOLVENT CEMENT WELDING



CVCART	D	EURO	COD.
Collari (rigati) <i>Stub Flanges</i> <i>(serrated)</i>	20	0,94	CVCART020
	25	1,04	CVCART025
	32	1,16	CVCART032
	40	1,94	CVCART040
	50	2,81	CVCART050
	63	5,18	CVCART063
	75	7,73	CVCART075
	90	9,28	CVCART090
	110	12,31	CVCART110
	125	20,45	CVCART125
	140	23,87	CVCART140
	160	25,89	CVCART160
	180	44,25	CVCART180
	200	44,33	CVCART200
	225	51,54	CVCART225
	250	67,90	CVCART250
	280	93,14	CVCART280
	315	106,51	CVCART315
	355	150,08	CVCART355
	400	180,13	CVCART400
450	185,11	CVCART450	
500	191,73	CVCART500	



CVFUPC	D	DN	EURO	COD.
Flange Libere ISO DIN PN10 <i>Backing Rings</i> <i>ISO DIN PN10</i>	20	15	3,46	CVFUPC020
	25	20	3,64	CVFUPC025
	32	25	4,21	CVFUPC032
	40	32	5,75	CVFUPC040
	50	40	6,38	CVFUPC050
	63	50	7,34	CVFUPC063
	75	65	9,83	CVFUPC075
	90	80	11,23	CVFUPC090
	110	100	13,44	CVFUPC110
	125	125	15,52	CVFUPC125
	140	125	16,58	CVFUPC140
	160	150	20,28	CVFUPC160
	180	175	40,89	CVFUPC180
	200	200	35,91	CVFUPC200
	225	200	42,37	CVFUPC225
	250	250	58,69	CVFUPC250
	280	250	73,24	CVFUPC280
	315	300	82,34	CVFUPC315
	355	350	120,89	CVFUPC355
	400	400	130,11	CVFUPC400
450	450	149,25	CVFUPC450	
PN6	500	500	167,62	CVFUPC50006
	PN10	500	182,43	CVFUPC50010

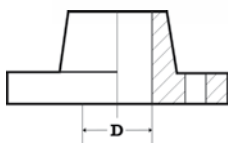


Foratura secondo
ISO DIN 2501 PN10
Drilled according to
ISO DIN 2501 PN10

**RACCORDI
IN PVC PER INCOLLAGGIO**
PVC FITTINGS FOR JOINTING
BY SOLVENT CEMENT WELDING



CVFLUC	D	DN	EURO	COD.
Flange a Collare ISO DIN PN10 <i>Slip on Flanges</i> ISO DIN PN10	20	15	3,73	CVFLUC020
	25	20	4,59	CVFLUC025
	32	25	5,69	CVFLUC032
	40	32	7,36	CVFLUC040
	50	40	8,69	CVFLUC050
	63	50	10,86	CVFLUC063
	75	65	15,17	CVFLUC075
	90	80	18,10	CVFLUC090
	110	100	23,79	CVFLUC110
	160	150	47,31	CVFLUC160
	225	200	88,29	CVFLUC225



Foratura secondo
ISO DIN 2501 PN10
Drilled according to
ISO DIN 2501 PN10

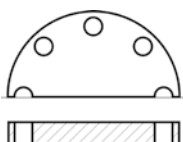
CVFCUD	D	DN	EURO	COD.
Flange cieche ISO DIN PN10 <i>Blank Flanges</i> ISO DIN PN10	20	15	4,18	CVFCUD020
	25	20	4,63	CVFCUD025
	32	25	5,61	CVFCUD032
	40	32	7,62	CVFCUD040
	50	40	9,41	CVFCUD050
	63	50	11,36	CVFCUD063
	75	65	15,65	CVFCUD075
	90	80	18,60	CVFCUD090
	110	100	22,65	CVFCUD110
	125	125	35,59	CVFCUD125
	140	125	35,59	CVFCUD140
	160	150	50,99	CVFCUD160
	180	175	65,10	CVFCUD180
	200	200	64,42	CVFCUD200
	225	200	64,42	CVFCUD225
	250	250	131,21	CVFCUD250
	280	250	131,21	CVFCUD280
	315 ¹	300	261,30	CVFCUD315
	355	350	(2)	CVFCUD355
	400	400	(2)	CVFCUD400
450	450	(2)	CVFCUD450	
500	500	(2)	CVFCUD500	



Foratura secondo
ISO DIN 2501 PN10.
Drilled according
to ISO DIN 2501 PN10.


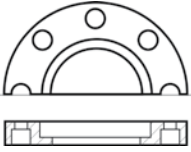
1) Da lastra sp. 30 mm
oppure stampata.
From PVC sheet thickness
30 mm or moulded.


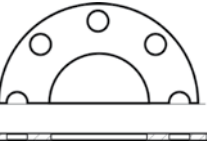
2) Prezzo a richiesta, da
lastra PVC sp. 30 mm.
Price on demand, from
PVC sheet thick. 30 mm.



**RACCORDI
IN PVC PER INCOLLAGGIO**
PVC FITTINGS FOR JOINTING
BY SOLVENT CEMENT WELDING



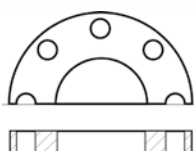
FLPPGFE - FLPPGFEV	D	DN	EURO	COD.
<p>Flange libere profilate PPG/Fe ISO DIN PN10 <i>Backing Rings profiled PPG/Fe ISO DIN PN10</i></p>   <p>Flange PP caricato vetro con inserto metallico. Foratura secondo ISO DIN 2501 PN10. Flanges in PP Fiber-Glass reinforced with metal insert. Drilled according to ISO DIN 2501 PN10.</p> <p>Sconto differenziato. Separate discount.</p>	20	15	4,04	FLPPGFE020
	25	20	4,50	FLPPGFE025
	32	25	4,80	FLPPGFE032
	40	32	5,74	FLPPGFE040
	50	40	7,13	FLPPGFE050
	63	50	8,99	FLPPGFE063
	75	65	9,92	FLPPGFE075
	90	80	12,25	FLPPGFE090
	110	100	16,74	FLPPGFEV110
	140	125	20,93	FLPPGFEV140
	160	150	25,57	FLPPGFEV160
	200	200	37,35	FLPPGFE200
	225	200	37,35	FLPPGFEV225
	250	250	46,66	FLPPGFE250
	280	250	46,66	FLPPGFEV280
	315	300	69,91	FLPPGFEV315

GUAREPDM	D	DN	EURO	COD.
<p>Guarnizioni EPDM ISO DIN PN10 per collari <i>Gaskets EPDM ISO DIN PN10 for stubs</i></p>   <p>Guarnizioni piane autocentranti. EPDM Nero - serie acqua. A richiesta per acqua potabile. Gaskets full face self-centering. Black EPDM - water series. On request for drinking water.</p> <p>Sconto differenziato. Separate discount.</p>	20	15	0,75	GUAREPDM020
	25	20	0,88	GUAREPDM025
	32	25	1,04	GUAREPDM032
	40	32	1,56	GUAREPDM040
	50	40	1,79	GUAREPDM050
	63	50	2,12	GUAREPDM063
	75	65	2,65	GUAREPDM075
	90	80	3,11	GUAREPDM090
	110	100	3,73	GUAREPDM110
	125	125	4,62	GUAREPDM125
	140	125	4,95	GUAREPDM140
	160	150	5,43	GUAREPDM160
	180	175	6,14	GUAREPDM180
	200	200	6,84	GUAREPDM200
	225	200	7,08	GUAREPDM225
	250	250	9,43	GUAREPDM250
	280	250	9,43	GUAREPDM280
	315	300	11,79	GUAREPDM315
	355	350	19,59	GUAREPDM355
	400	400	27,90	GUAREPDM400
450	450	30,48	GUAREPDM450	
PN6	500	500	32,77	G-EPDM50006
PN10	500	500	35,50	G-EPDM50010

**RACCORDI
IN PVC PER INCOLLAGGIO**
PVC FITTINGS FOR JOINTING
BY SOLVENT CEMENT WELDING



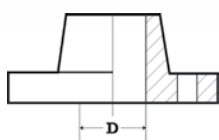
CVFAPC - CVFDAB	D	DN	EURO	COD.
Flange libere ANSI 150 <i>Backing Rings ANSI 150</i>	20	15 - 1/2"	4,49	CVFAPC020
	25	20 - 3/4"	7,46	CVFAPC025
	32	25 - 1"	9,38	CVFAPC032
	40	32 - 1 1/4"	11,37	CVFAPC040
	50	40 - 1 1/2"	12,59	CVFAPC050
	63	50 - 2"	14,47	CVFAPC063
	75	65 - 2 1/2"	16,72	CVFAPC075
	90	80 - 3"	19,04	CVFAPC090
	110	100 - 4"	22,62	CVFAPC110
	160	150 - 6"	20,28	CVFAPC160
	160 ¹	150 - 6"	27,24	CVFDAB160
	200 ¹	200 - 8"	40,64	CVFDAB200
	225 ¹	200 - 8"	47,97	CVFDAB225
	250 ¹	250 - 10"	68,44	CVFDAB250
	280 ¹	250 - 10"	82,88	CVFDAB280



Foratura secondo
ANSI B 16,5 cl.150.
Drilled according
to ANSI B 16,5 cl.150.

1) Flange libere con foratura
universale ISO DIN PN10 -
ANSI 150 - BS/E.
Backing rings with universal
drilling ISO DIN PN10 -
ANSI 150 - BS/E.

CVFLAC	D	DN	EURO	COD.
Flange a collare ANSI 150 <i>Slip on Flanges ANSI 150</i>	20	15 - 1/2"	5,35	CVFLAC020
	25	20 - 3/4"	9,16	CVFLAC025
	32	25 - 1"	10,74	CVFLAC032
	40	32 - 1 1/4"	12,02	CVFLAC040
	50	40 - 1 1/2"	13,62	CVFLAC050
	63	50 - 2"	16,54	CVFLAC063
	75	65 - 2 1/2"	22,60	CVFLAC075
	90	80 - 3"	26,73	CVFLAC090
	110	100 - 4"	34,80	CVFLAC110
	160	150 - 6"	47,31	CVFLAC160

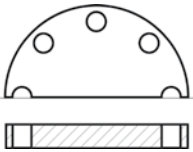


Foratura secondo
ANSI B 16,5 cl.150.
Drilled according to
ANSI B 16,5 cl.150.

**RACCORDI
IN PVC PER INCOLLAGGIO**
PVC FITTINGS FOR JOINTING
BY SOLVENT CEMENT WELDING

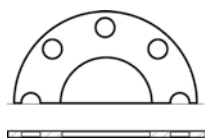


CVFCAA - CVFCDAB	D	DN	EURO	COD.
Flange cieche ANSI 150 Blank Flanges ANSI 150	20	15 - 1/2"	6,02	CVFCAA020
	25	20 - 3/4"	9,40	CVFCAA025
	32	25 - 1"	11,04	CVFCAA032
	40	32 - 1 1/4"	11,98	CVFCAA040
	50	40 - 1 1/2"	14,31	CVFCAA050
	63	50 - 2"	17,31	CVFCAA063
	75	65 - 2 1/2"	23,25	CVFCAA075
	90	80 - 3"	28,33	CVFCAA090
	110	100 - 4"	33,02	CVFCAA110
	160	150 - 6"	50,99	CVFCAA160
	200 ¹	200 - 8"	92,51	CVFCDAB200
	225 ¹	200 - 8"	92,51	CVFCDAB225
	250 ¹	250 - 10"	183,67	CVFCDAB250
	280 ¹	250 - 10"	183,67	CVFCDAB280



Foratura secondo ANSI B 16,5 cl.150.
Drilled according to ANSI B 16,5 cl.150.
1) Flange cieche con foratura universale
ISO DIN PN10 - ANSI 150 - BS/E.
Blank Flanges with universal drilling
ISO DIN PN10 - ANSI 150 - BS/E.

ASAEPDM	D	DN	EURO	COD.
Guarnizioni EPDM ANSI 150 per collari Gaskets EPDM ANSI 150 for stubs	20	15 - 1/2"	0,98	ASAEPDM020
	25	20 - 3/4"	1,14	ASAEPDM025
	32	25 - 1"	1,35	ASAEPDM032
	40	32 - 1 1/4"	2,02	ASAEPDM040
	50	40 - 1 1/2"	2,33	ASAEPDM050
	63	50 - 2"	2,76	ASAEPDM063
	75	65 - 2 1/2"	3,44	ASAEPDM075
	90	80 - 3"	4,05	ASAEPDM090
	110	100 - 4"	4,85	ASAEPDM110
	160	150 - 6"	5,43	ASAEPDM160
	200	200 - 8"	8,89	ASAEPDM200
	225	200 - 8"	9,20	ASAEPDM225
	250	250 - 10"	12,27	ASAEPDM250
	280	250 - 10"	12,27	ASAEPDM280



Guarnizioni piane autocentranti.
EPDM Nero - serie acqua.
A richiesta per acqua potabile.
Gaskets full face self-centering.
Black EPDM - water series.
On request for drinking water.

Sconto differenziato.
Separate discount.

C39

RACCORDI IN PVC PER INCOLLAGGIO PVC FITTINGS FOR JOINTING BY SOLVENT CEMENT WELDING



CVGIDI	D	DN	EURO	COD.
Giunti di dilatazione con flange PVC ISO DIN PN10 <i>Expansion Joints with PVC Flanges ISO DIN PN10</i>	63	50	154,80	CVGIDI063
	90	80	173,64	CVGIDI090
	110	100	224,97	CVGIDI110
	125	125	276,03	CVGIDI125
	160	150	324,85	CVGIDI160
	200	200	402,07	CVGIDI200
	  <p>Sconto differenziato. Separate discount.</p> <p>Corsa = 80mm. Con OR in EPDM. A richiesta OR in FPM. Stroke = 80mm. With OR in EPDM. On demand OR in FPM.</p>			

PPCOFLA	D	DN	EURO	COD.
Copri Flange stampati in PP <i>Flange Covers PP Moulded</i>	20	15	14,75	PPCOFLA020
	25	20	14,75	PPCOFLA025
	32	25	14,75	PPCOFLA032
	40	32	19,68	PPCOFLA040
	50	40	19,68	PPCOFLA050
	63	50	19,68	PPCOFLA063
	75	65	27,62	PPCOFLA075
	90	80	27,62	PPCOFLA090
	110	100	43,08	PPCOFLA110
	125	125	60,64	PPCOFLA125
	140	125	60,64	PPCOFLA140
	160	150	73,58	PPCOFLA160
	180	200	81,52	PPCOFLA180
	200	200	81,52	PPCOFLA200
	225	200	81,52	PPCOFLA225
	250	250	139,69	PPCOFLA250
	280	250	139,69	PPCOFLA280
315	300	170,94	PPCOFLA315	
  <p>Sconto differenziato. Separate discount.</p>				

**SPESSORI TUBI
IN PVC SECONDO UNI EN ISO 1452:2010**
PVC PIPES' THICKNESS
ACCORDING TO EN ISO 1452:2009



(mm)

Diametro esterno nominale <i>Nominal outside diameter</i>	Spessore nominale (minimo) di parete <i>Nominal (minimum) wall thickness</i>						
	S 20 (SDR 41)	S 16 (SDR 33)	S 12.5 (SDR 26)	S 10 (SDR 21)	S 8 (SDR 17)	S 6.3 (SDR 13.6)	S 5 (SDR 11)
d_n	Pressione nominale PN basata sul coefficiente di impiego (progetto) C = 2.5 <i>Nominal pressure PN based on service (design) coefficient C = 2.5</i>						
		PN 6	PN 8	PN 10	PN 12.5	PN 16	PN 20
12							1.5
16							1.5
20						1.5	1.9
25					1.5	1.9	2.3
32			1.5	1.6	1.9	2.4	2.9
40		1.5	1.6	1.9	2.4	3.0	3.7
50		1.6	2.0	2.4	3.0	3.7	4.6
63		2.0	2.5	3.0	3.8	4.7	5.8
75		2.3	2.9	3.6	4.5	5.6	6.8
90		2.8	3.5	4.3	5.4	6.7	8.2
	Pressione nominale PN basata sul coefficiente di impiego (progetto) C = 2.0 <i>Nominal pressure PN based on service (design) coefficient C = 2.0</i>						
	PN 6	PN 8	PN 10	PN 12.5	PN 16	PN 20	PN 25
110	2.7	3.4	4.2	5.3	6.6	8.1	10.0
125	3.1	3.9	4.8	6.0	7.4	9.2	11.4
140	3.5	4.3	5.4	6.7	8.3	10.3	12.7
160	4.0	4.9	6.2	7.7	9.5	11.8	14.6
180	4.4	5.5	6.9	8.6	10.7	13.3	16.4
200	4.9	6.2	7.7	9.6	11.9	14.7	18.2
225	5.5	6.9	8.6	10.8	13.4	16.6	
250	6.2	7.7	9.6	11.9	14.8	18.4	
280	6.9	8.6	10.7	13.4	16.6	20.6	
315	7.7	9.7	12.1	15.0	18.7	23.2	
355	8.7	10.9	13.6	16.9	21.1	26.1	
400	9.8	12.3	15.3	19.1	23.7	29.4	
450	11.0	13.8	17.2	21.5	26.7	33.1	
500	12.3	15.3	19.1	23.9	29.7	36.8	
560	13.7	17.2	21.4	26.7			
630	15.4	19.3	24.1	30.0			
710	17.4	21.8	27.2				
800	19.6	24.5	30.6				
900	22.0	27.6					
1000	24.5	30.6					

Nota/Note 1 - Lo spessore nominale di parete è conforme alla ISO 4065.
The nominal wall thicknesses conform to ISO 4065.

Nota/Note 2 - Per applicare un coefficiente globale di servizio (progetto) di 2.5 invece di 2.0 per tubi di diametro nominale maggiore di 90 mm, deve essere scelta la classe superiore di pressione PN.
To apply an overall service (design) coefficient of 2.5 (instead of 2.0) for pipes with nominal diameters above 90 mm, the next higher pressure rating, PN, shall be chosen.

Nota/Note 3 - I valori di PN 6 per S 20 e S 16 sono calcolati con il numero preferenziale 6.3.
The PN 6 values for S 20 and S 16 are calculated with the preferred number 6.3.